

## Lab-Guard Series



## Lab-Guard Series

### Scope of Application

The Lab-Guard ULT freezer can be used for the storage and protection of temperature sensitive samples, vaccines, longitudinal study samples, important medical research samples, valuable pharmaceutical products, clinical trial samples.

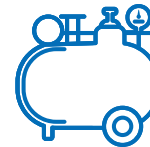
### ■ Safer by Design



Slim cabinet design for better access



World leading energy saving



World-famous Components



Fast Cabinet Pull Down



Superior temperature recover time



VIP PLUS design



**MD-86L358**



### High Space-Efficient

Maximize space efficiency with 11% more sample storage compared to competitors, delivering exceptional value with a high-performance-to-price ratio.



### Low Noise

Enjoy enhanced satisfaction with our low-noise design, Specialized refrigeration system with whisper-quiet components. Freezer chassis minimizes vibration and absorbs noise.



### Safe and Reliable Samples Storage

Superior temperature uniformity; Imported world-famous components.



### Double Door Design

Two independent/detachable inner door allows better samples management. And each inner door has gasket which will reduce heat exchange rate and retaining the inner temperature better.



### Multi-level Alarms

Alarm functions include high, low temperature, sensor error, power failure, high ambient alarm, door open alarm etc. Capable of producing two types of alarm outputs: audible buzzer and visible flashing.



### Optimized Refrigeration System

High efficiency cooling fans and compressors, combined with hydrocarbon refrigerants, ensure energy savings and long-term sample security.



**MD-86L358**

### 1 Multi-layer Sealing Structure

Multi-layers gaskets provide a tight seal between the inner doors and outer door, reducing heat exchange rate and retaining the inner temperature better when there is power failure.

### 2 VIP PLUS Design

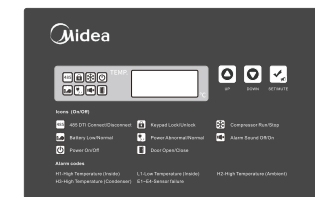
Provides up to 30% more storage capacity than a conventionally insulated freezer, without increasing the footprint. A glass fibre core provides advanced thermal properties.

### 3 USB Port

Enables users to download historical temperature data for compliance/auditing purposes.

### 4 LED Display

LED display for easy set, and ambient temperatures, ensuring user-friendly operation with minimal errors.



### 5 Mechanical Assisted Door Handles

Mechanical assisted door handles make opening the door more convenient. Lockable handle safeguards your precious samples. Padlock can also be added for extra sample safety.

### 6 Heated Pressure Equalization Port

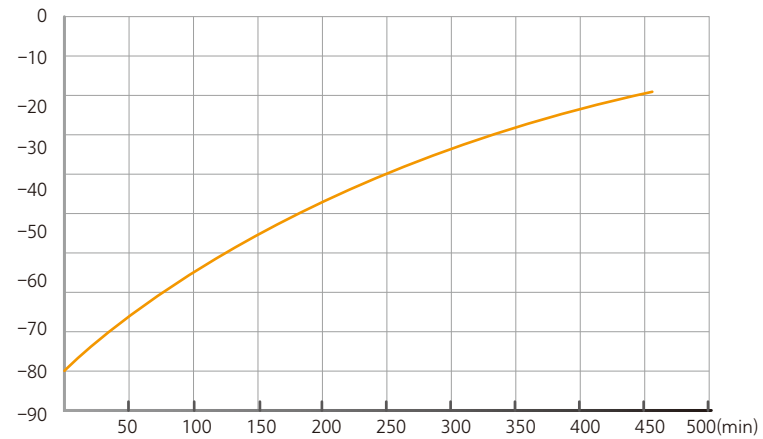
It allows users to re-open the main door quickly when entering, rust-proof, freeze-free.

### 7 Narrow Door Design

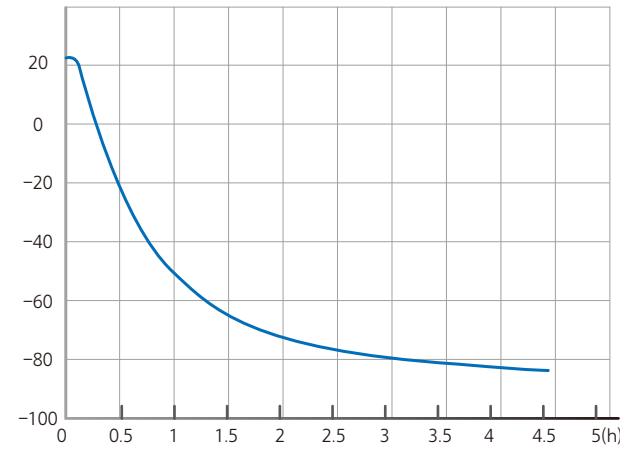
The freezer can pass through an 750mm wide door when the door is open.

## TYPICAL PERFORMANCE CHARACTERISTICS AT 25°C AMBIENT

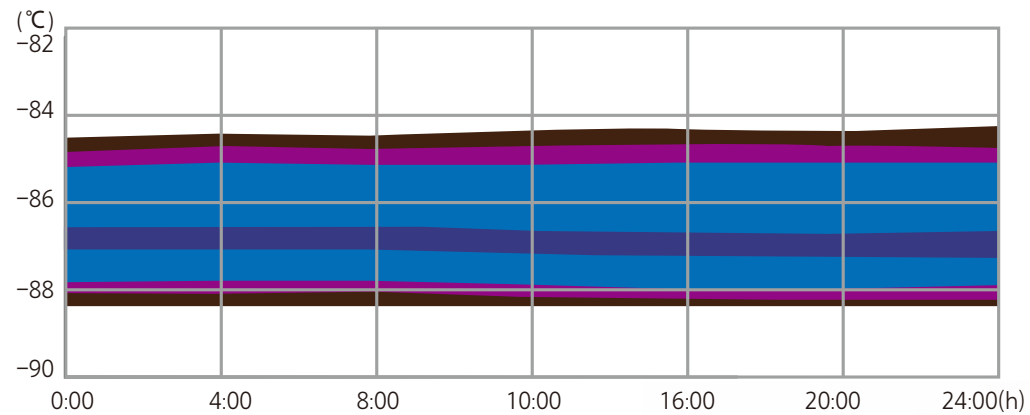
### Temperature recover curve



### Temperature cool down curve



### Temperature uniformity



Item	Model No.	MD-86L358
Product Image	Product Image	
Technical Data	Cabinet Type	Upright
	Climate Class	N
	Cooling Type	Direct cooling
	Defrost	Manual
	Refrigerant	Mixed refrigerant
	Total Storage Volume(L)	358
	2ml Cryo Tube Qty	24000
	External Material	High quality coated steel
Control	Inner Material	PCM liner
	Controller	Microprocessor
	Display	LED
	Temperature Accuracy(°C)	0.1
Dimensions	Temperature Range	-40 ~ -86°C
	Product Dimensions(mm)(wxdxh)	795*885*1855
Electrical Data	Interior Dimensions(mm)(wxdxh)	450*583*1326
	Power Supply	220-240V/50Hz
Functions	High Temperature Alarm	Y
	Low Temperature Alarm	Y
	Door Ajar	Y
	Power Failure Alarm	Y
	High condenser temperature alarm	Y
	High ambient Temperature Alarm	Y
	Low Battery	Y
	Sensor Failure alarm	Y
	USB Interface	Y
	Door Heating	Y
	Porthole	Y
	Universal Wheel	Y
	Caster	Y

Ihr Fachhändler:  
[www.axon-labortechnik.de](http://www.axon-labortechnik.de)



Axon Laborotechnik GmbH  
 Im Braumenstück 16 - D-67659 Kaiserslautern  
 Verkaufsbüro Tel. 06223/95 41 190 Fax: 06223/95 40 714  
[info@axon-labortechnik.de](mailto:info@axon-labortechnik.de)